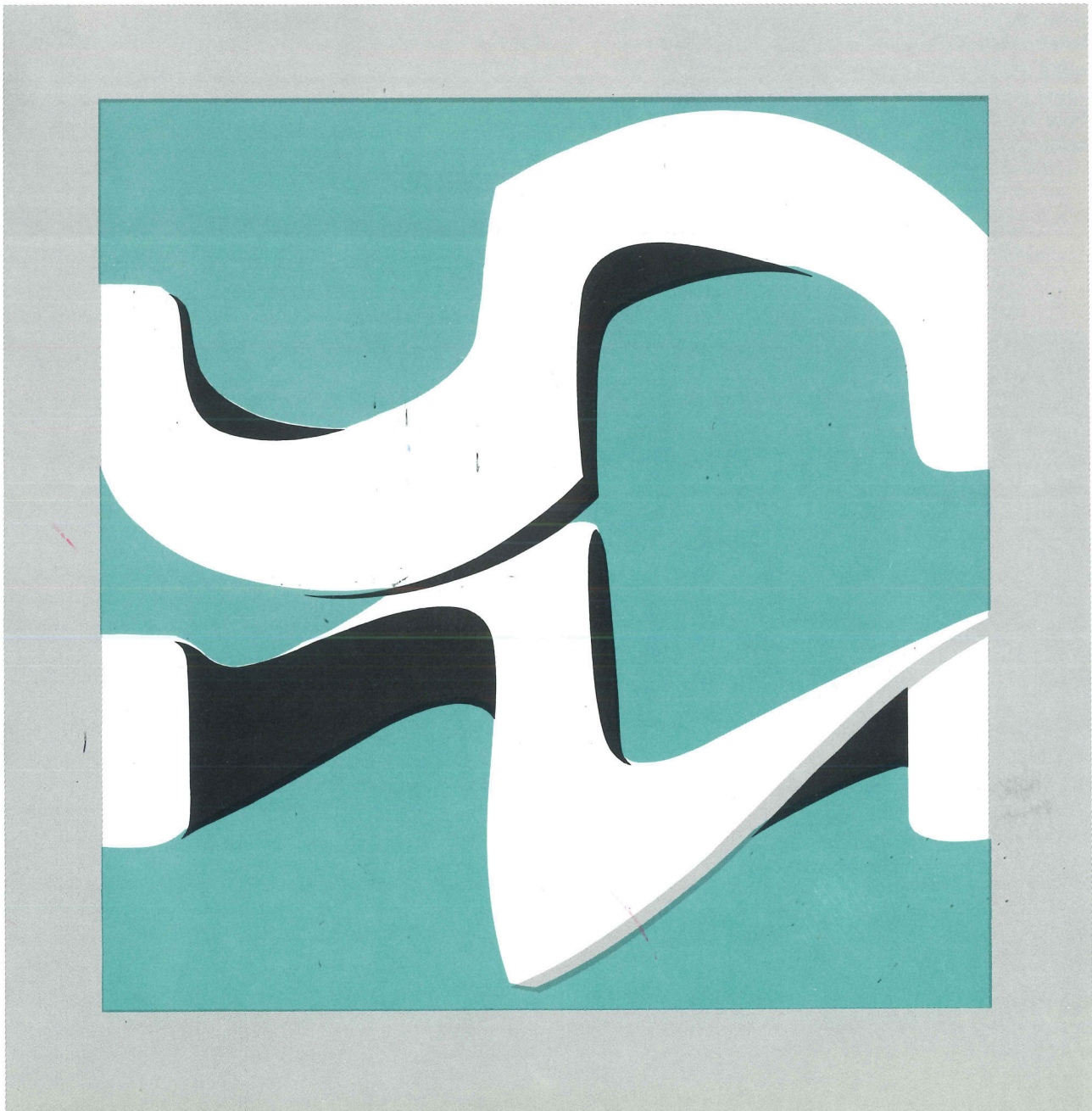
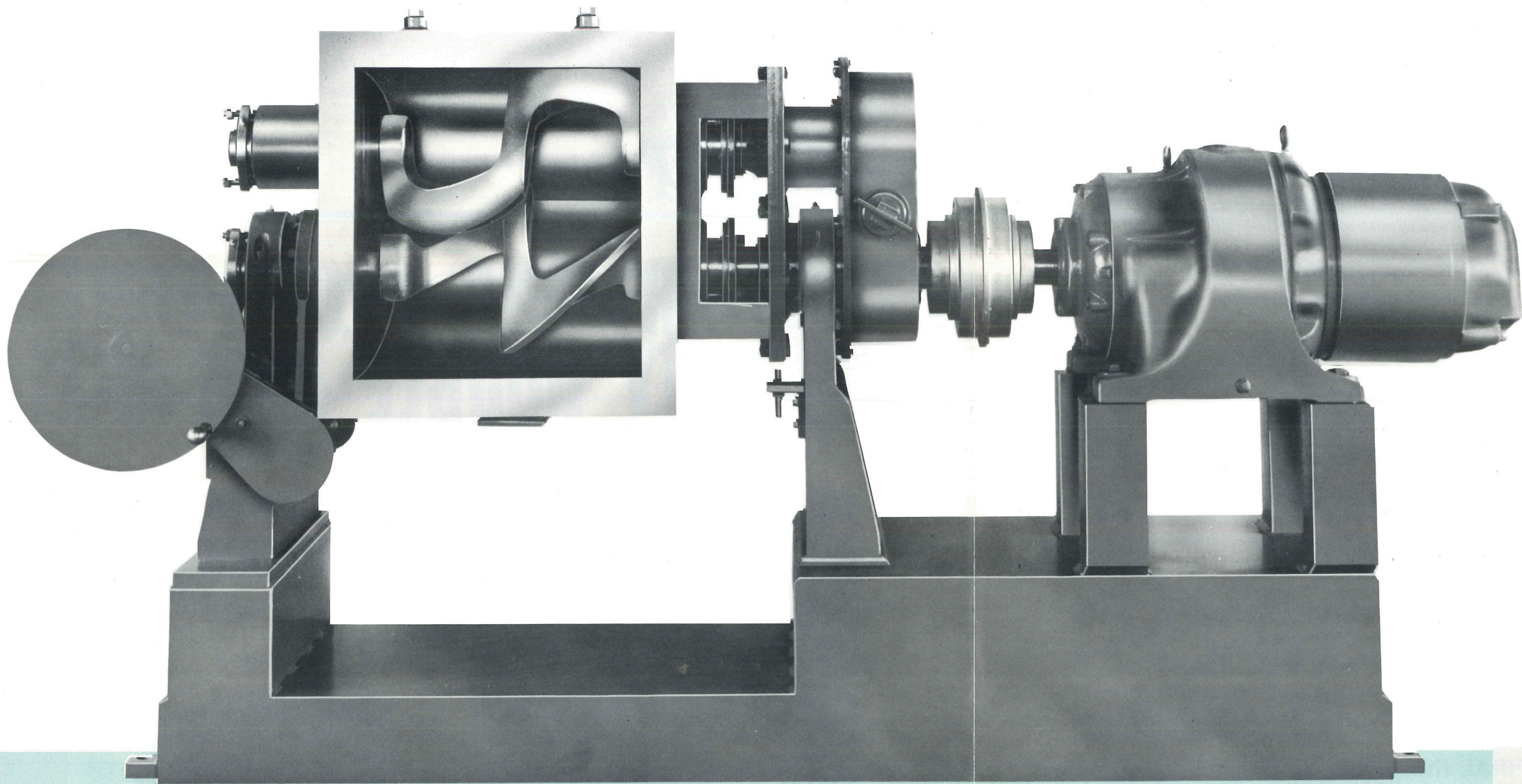




LABORATORY AND PILOT PLANT HEAVY DUTY DOUBLE ARM MIXERS





READCO DOUBLE ARM MIXERS

Heavy Duty • Medium Duty

Production sizes of Readco Double Arm Mixers are available in two types, Heavy and Medium Duty. Basic design and mixing action of both types are identical.

Heavy Duty mixers are available in working capacities from 10 to 400 gallons, and with stationary or tilting bowls. Medium Duty mixers are available in working capacities from 75 to 1500 gallons, and with tilting bowls only. The optional features listed under Laboratory and Pilot Plant models are available for these full-size production mixers.



LABORATORY AND PILOT PLANT HEAVY DUTY DOUBLE ARM MIXERS

provide complete ingredient dispersion in shorter cycles at lower cost

Readco Laboratory and Pilot Plant Double Arm Mixers are designed for heavy duty mixing, blending or kneading of medium to high-density materials. Available in one, three, six and 20 quarts, they duplicate conditions of full-size Readco double arm mixers, assuring test personnel of accurate results that can be applied directly to volume production.

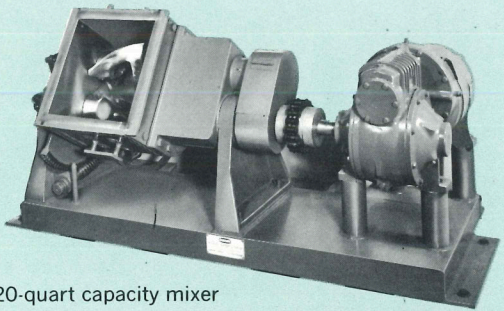
Like production mixers, Laboratory and Pilot Plant sizes feature sigma arms that provide an overlapping action which eliminates dead spots, assures a faster distribution of materials. Ingredient buildup is prevented and mixing time is reduced because of the close tolerances maintained between arms and bowl.

STANDARD MIXERS / OPTIONAL FEATURES

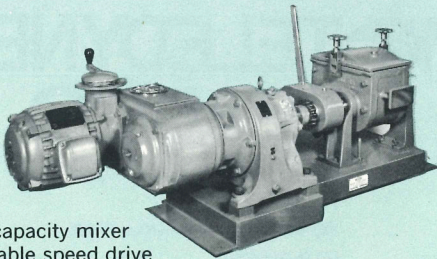
Standard Laboratory and Pilot Plant Double Arm Mixers are constructed of Type 316 stainless steel. They are equipped for atmospheric and vacuum operation and are supplied with single speed motors as well as tilting bowls having 150 psig ASME code jackets.

Mixers are available on order constructed of carbon steel or any commercial alloy and with any type of motor—totally enclosed, explosion-proof, variable speed. Other optional features include: electrically heated bowls; pressurized bowls; bowl extensions; thermometer wells; dispersion blades; Nabon blades. Interchangeable mixing arms in numerous designs can be provided to adapt to various materials or processes.

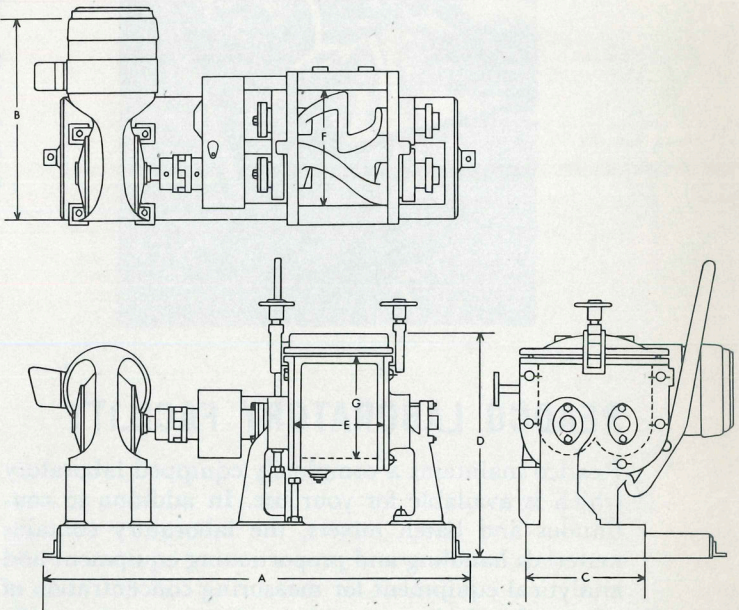
Stock units can be shipped within a week, pending type of motor required.



20-quart capacity mixer

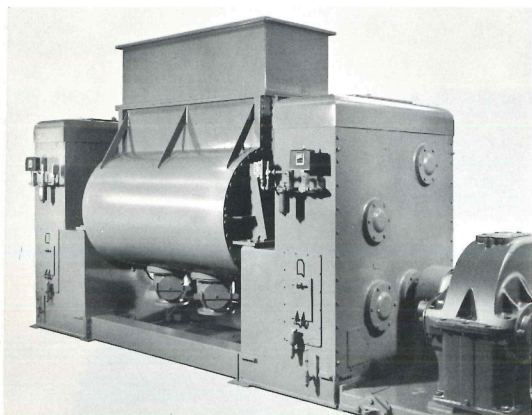


3-quart capacity mixer with variable speed drive



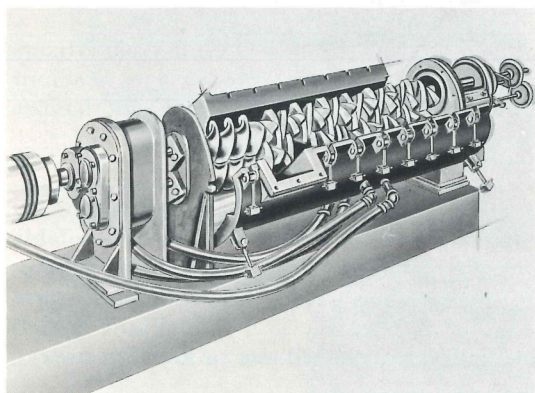
		Dimensions in Inches										Arm RPM
Capacity Quarts		Overall*				Bowl			Motor HP			
Working	Total	A	B	C	D	E	F	G	Standard	Optional		
1	1½	29	15½	9	13	4	5¾	5	½	½	68	
3	4½	32½	15½	9	16	6¾	8½	7	¾	1	56	
6	9	37	18¾	10	19¾	9	8½	8	1½	2	45	
20	30	61½	31½	19¾	28	12½	13½	12	5		45	

*Overall dimensions will vary depending upon type of motor used.



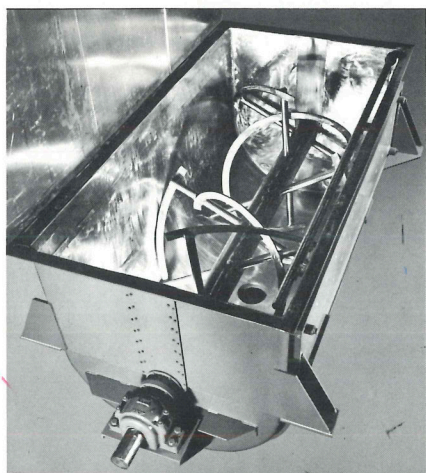
DUAL LEVEL MIXERS

provide thorough mixing of extremely dense, viscous and heavy materials in less time and without peak loads. The dual level bowl has an effective mixing and jacketed area 50% greater than conventional double arm mixers. Dual level mixers are available in working capacities from 10 to 900 gallons. Laboratory models are available in 10, 25 and 75-gallon working capacities.



CONTINUOUS PROCESSORS

are used for continuous mixing, blending and kneading of pastes, semi-solids and high-viscosity materials, and for continuous reaction, polymerization, heating and cooling. Unique 2-way mixing action assures complete uniformity. Processors are available with various agitator designs up to 30 inches in diameter.



SPIRAL RIBBON MIXERS

feature a counterflow action that provides fast, thorough mixing or blending of materials. Granular, pulverized, dry or wet ingredients can be processed. Mixers are available in working capacities to 650 cu. ft. Pilot and Laboratory models can be supplied in working capacities to 3 cu. ft.

READCO LABORATORY FACILITY

Readco maintains a completely equipped laboratory which is available for your use. In addition to continuous and batch mixers, the laboratory contains materials handling and proportioning equipment and analytical equipment for measuring concentration of solids, chemical composition, viscosity and specific gravity.



901 SOUTH RICHLAND AVENUE
P.O. BOX 552
YORK, PENNSYLVANIA 17405
(717) 848-2801